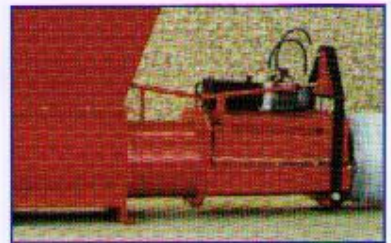
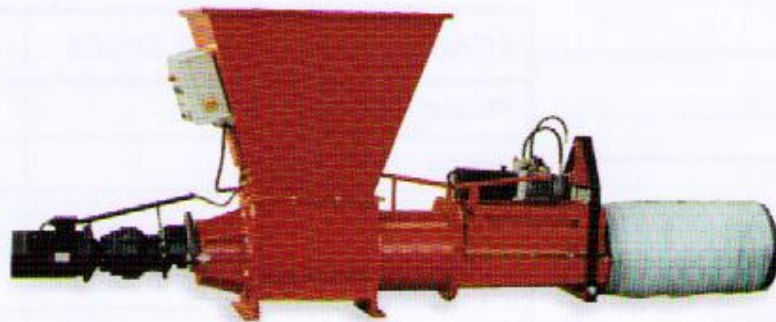




WASTE CONTROL
INTERNATIONAL

New Screw Compactor
For Waste Handling & Recycling

Compacts: Filled or empty Polyethylene Terephthalate (PET),
Aluminum Cans and Milk Bottles/Cartons



420 Main Avenue • Neche, North Dakota 58265
701.886.7630 • Toll Free: 1.866.417.8711 • Fax: 701.886.7649

Waste Control International's New Screw Compactor

Waste Control International's Screw Compactor is a low-maintenance machine capable of handling large throughputs of material while still maintaining a high compaction rate continuously throughout operation. Originally designed for densifying polystyrene, this screw compactor has proven highly successful in compacting other materials as well, including PET bottles and aluminum cans, both filled and empty.

Efficient

Handles large throughputs of materials, even in demanding situations.

Flexible

Utilizes special hoppers to densify a wide variety of materials – it's the right machine for almost any application.

Profitable

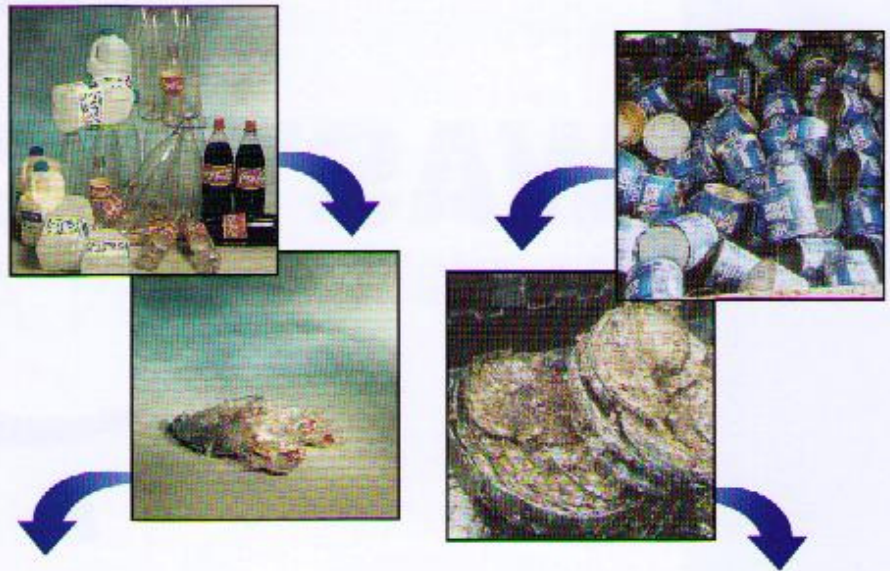
Has the ability to convert PET bottles and cartons into a saleable product.

Easy To Use

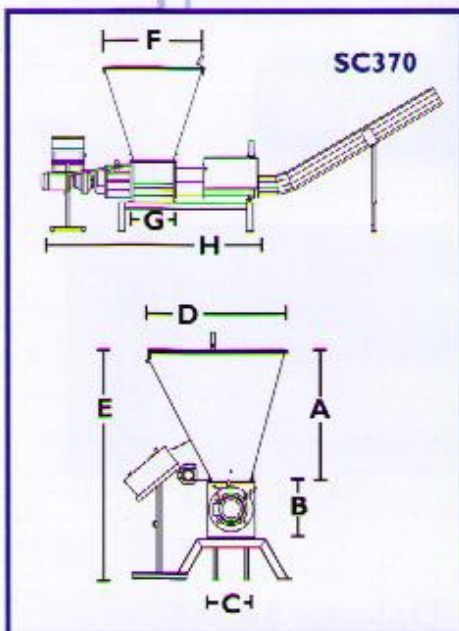
This system can be completely automated.

Heavy-Duty Construction

This machine is built to last.



MATERIAL	COMPACTION RATIO	SPEED	
		SC240	SC370
PET Bottles (20 oz.)	14:1	7,000/hr	15,000/hr
Filled Aluminum Cans (12 oz.)	20:1	10,000/hr	20,000/hr
Filled Milk Bottles or Cartons (Variable Sizes)		n/a	10,000/hr



SCREW COMPACTOR SPECS		SC240	SC370	
Motor Rating: Screw		5.5kw/7.0hp	15kw/20hp	
Amps		11.8	28.0	
Electrical Supply		3x460v	3x460v	
Machine Weight		1430 lbs	2420 lbs	
Dimensions:	A	39"	56"	
	B	16"	24.5"	
	C	14"	21.5"	
	D	Varies By Hopper	29.5" Standard	61" Standard
	E	Varies By Hopper	62" Standard	98" Standard
	F	34.5"	57.5"	
	G	15.5"	23.5"	
	H	Minimum	90"	130"